



HaBaWaBa
Asia 2018 - Singapore Edition

Supporter Pack

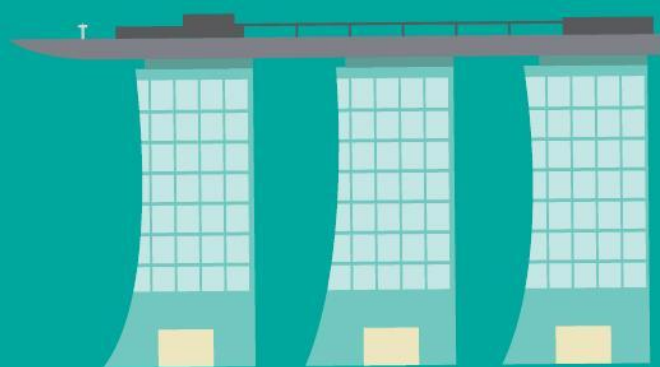
For all queries regarding accommodations, transport, and tours for friends, families, and supporters, please contact us at travel@habawabaasia.com.

OFFICIAL TRAVEL PARTNER



SEA WHEEL TRAVEL

HOTEL





海倫旅遊私人有限公司
SEA WHEEL TRAVEL PTE LTD



V HOTEL LAVENDER / HOTEL BOSS

| | |
|--|--|
| 100 X SUPERIOR TWN 100 X SUPERIOR DBL | USD116 nett per room per night <i>Inclusive of 01/02 breakfast & WIFI</i> |
| 150 X SUPERIOR DBL 100 X SUPERIOR TWN | USD116 nett per room per night <i>Inclusive of 01/02 breakfast & WIFI</i> |



DORSETT SINGAPORE

| | |
|---|--|
| DORSETT ROOM (MIN 4 NIGHTS) (MAX CAPPED AT 30 ROOMS) | USD142 nett per room per night <i>Inclusive of 01/02 breakfast & WIFI</i> |
|---|--|



海倫旅遊私人有限公司
SEA WHEEL TRAVEL PTE LTD



CARLTON HOTEL SINGAPORE

RUN-OF-THE-HOUSE
(MIN 4 NIGHTS)

USD228 nett per room per night
Inclusive of 01/02 breakfast & WIFI



PAN PACIFIC SINGAPORE

DELUXE ROOM (MIN 4 NIGHTS)
(MAX CAPPED AT 50 ROOMS)

USD202 nett per room per night
Inclusive of 01/02 breakfast & WIFI



海倫旅遊私人有限公司
SEA WHEEL TRAVEL PTE LTD



SOFITEL SINGAPORE CITY CENTRE

LUXURY ROOM
(MIN 4 NIGHTS)

USD236 nett per room per night
Inclusive of 01/02 breakfast & WIFI

TRANSPORTATION





海倫旅遊私人有限公司
SEA WHEEL TRAVEL PTE LTD



40 – 45 SEATER COACH

ARRIVAL/ DEPARTURE TRANSFER
USD101 NETT PER COACH PER WAY

MIDNIGHT SURCHARGE (2300HRS – 0700HRS)– USD15 NETT PER COACH
TOUR GUIDE SERVICES – USD45 NETT PER TRANSFER

CITY TRANSFER
USD86 NETT PER COACH PER WAY

09 - 13 SEATER COMBI

ARRIVAL/ DEPARTURE TRANSFER
USD45 NETT PER VEHICLE PER WAY

MIDNIGHT SURCHARGE (2300HRS – 0700HRS)– USD15 NETT PER VEHICLE

CITY TRANSFER
USD41 NETT PER VEHICLE PER WAY

MAIN OFFICE

101 Upper Cross Street, #03-61
People's Park Centre, Singapore 058357
T: +65 65385557 F: +65 65325557

OPERATIONS OFFICE

101 Upper Cross Street, #06-09/10
People's Park Centre, Singapore 058357
T: +65 65335557 F: +65 65321551

COMPANY DETAILS

ROC: 199301539Z
GST Reg: M201134315
TA: 0861

est. 1993

OPTIONAL TOURS





海倫旅遊私人有限公司
SEA WHEEL TRAVEL PTE LTD



SINGAPORE CITY EXPERIENCE

| Duration | Pick Up Time | Start Time |
|---|--------------|--|
| 3.5 hours | 8.30 AM | 9.00 AM |
| <ol style="list-style-type: none">1. Stop at the Merlion Park2. Visit Thian Hock Keng Temple3. Little India <ul style="list-style-type: none">• Includes non-refundable admission to National Orchid Garden | | <p>Terms & Conditions</p> <ul style="list-style-type: none">• Rates are valid for minimum 2 adults to go.• All tours or transfers are based on SIC basic. |

| ADULT | CHILD |
|-------|-------|
| USD26 | USD14 |



海倫旅遊私人有限公司
SEA WHEEL TRAVEL PTE LTD



MORNING AT THE ZOO!

| Duration | Pick Up Time | Start Time |
|----------|--------------|------------|
| 4 hours | 8.00 AM | 8.30 AM |

Terms & Conditions

- Rates are valid for minimum 2 adults to go.
- All tours or transfers are based on SIC basic.

| ADULT | CHILD |
|-------|-------|
| USD41 | USD25 |



海倫旅遊私人有限公司
SEA WHEEL TRAVEL PTE LTD



RIVER SAFARI

| DURATION | PICK UP TIME | START TIME |
|-----------|--------------|------------|
| 3.5 hours | 1.30pm | 2.00pm |

- River Safari – Boat ride will not operate during bad weather. Restrictions Apply.
- Child Between 1.06m to 1.35m must be accompanied by an adult.

Terms & Conditions

- Rates are valid for minimum 2 adults to go.
- All tours or transfers are based on SIC basic.

| ADULT | CHILD |
|-------|-------|
| USD41 | USD24 |



海倫旅遊私人有限公司
SEA WHEEL TRAVEL PTE LTD



NIGHT SAFARI

| DURATION | PICK UP TIME | START TIME |
|-----------|--------------|------------|
| 4.5 hours | 6.00 PM | 6.30 PM |

- Tour duration includes travelling time to and from the attraction

Terms & Conditions

- Rates are valid for minimum 2 adults to go.
- All tours or transfers are based on SIC basic.

| ADULT | CHILD |
|-------|-------|
| USD49 | USD32 |



海倫旅遊私人有限公司
SEA WHEEL TRAVEL PTE LTD



JURONG BIRD PARK

| DURATION | PICK UP TIME | START TIME |
|-----------|--------------|------------|
| 3.5 hours | 1.30 PM | 2.00 PM |

Terms & Conditions

- Rates are valid for minimum 2 adults to go.
- All tours or transfers are based on SIC basic.

| ADULT | CHILD |
|-------|-------|
| USD36 | USD21 |



海倫旅遊私人有限公司
SEA WHEEL TRAVEL PTE LTD



ONE DAY PASS + ONE-WAY TRANSFER

UNIVERSAL STUDIOS SINGAPORE

ADULT

USD62

CHILD

USD47

S.E.A. AQUARIUM

USD31

USD25

ADVENTURE COVE WATERPARK

USD34

USD27

- Park operating hours are subjected to changes without prior notice, guest may visit www.rwsentosa.com for updates prior.
- Attractions height requirements apply
- No refund, change of date allowed once ticket is issued
- Island admission to Sentosa is chargeable at selected gateway
- Pick-Up time: 8.30am
- Includes pick-up from city hotels to tour centre to Universal Studios Singapore / SEA Aquarium / Adventure Cove Waterpark (excludes Sentosa hotels)
- Excludes drop off at hotel.

Terms & Conditions

- Rates are valid for minimum 2 adults to go.
- All tours or transfers are based on SIC basic.



海倫旅遊私人有限公司
SEA WHEEL TRAVEL PTE LTD



GARDENS BY THE BAY WITH ONE WAY TRANSFER

- Includes admission to two conservatories & OCBC Skyway.
- Includes pick-up from city hotels to tour centre to Gardens by the Bay.
- Excludes drop-off at hotel.
- Refer to Gardens by the Bay website for conservatories closure dates: www.gardensbythebay.com.sg

Terms & Conditions

- Rates are valid for minimum 2 adults to go.
- All tours or transfers are based on SIC basic.

PICK UP TIME

8.30 PM

ADULT

USD29

CHILD

USD18



海倫旅遊私人有限公司
SEA WHEEL TRAVEL PTE LTD



AFTERNOON AT SENTOSA

| DURATION | PICK UP TIME | START TIME |
|-----------|--------------|------------|
| 6.5 hours | 1.30 PM | 2.00 PM |

Terms & Conditions

- Rates are valid for minimum 2 adults to go.
- All tours or transfers are based on SIC basic.

| ADULT | CHILD |
|-------|-------|
| USD60 | USD53 |



海倫旅遊私人有限公司
SEA WHEEL TRAVEL PTE LTD



NIGHTOUT AT CHINATOWN

| DURATION | PICK UP TIME | START TIME |
|----------|--------------|------------|
| 4 hours | 6.00 PM | 6.30 PM |

- Dinner is served between 8.00pm to 8.15pm. Drinks during dinner are not included
- Trishaw Ride is based on 'twin-sharing' basis.

Terms & Conditions

- Rates are valid for minimum 2 adults to go.
- All tours or transfers are based on SIC basic.

| ADULT | CHILD |
|-------|-------|
| USD71 | USD53 |



海倫旅遊私人有限公司
SEA WHEEL TRAVEL PTE LTD



NIGHTOUT AT MARINA BAY

| DURATION | PICK UP TIME | START TIME |
|----------|--------------|------------|
| 4 hours | 6.00 PM | 6.30 PM |

| | |
|--|--|
| <ul style="list-style-type: none">Includes admission to two conservatoriesIncludes \$5.00 dining voucher to be used at the SuperTree Dining outletsExcludes admission to OCBC SkywayIncludes Marina Bay Sands' Skypark admission (weather permitting) | <p>Terms & Conditions</p> <ul style="list-style-type: none">Rates are valid for minimum 2 adults to go.All tours or transfers are based on SIC basic. |
|--|--|

| ADULT | CHILD |
|-------|-------|
| USD60 | USD39 |